

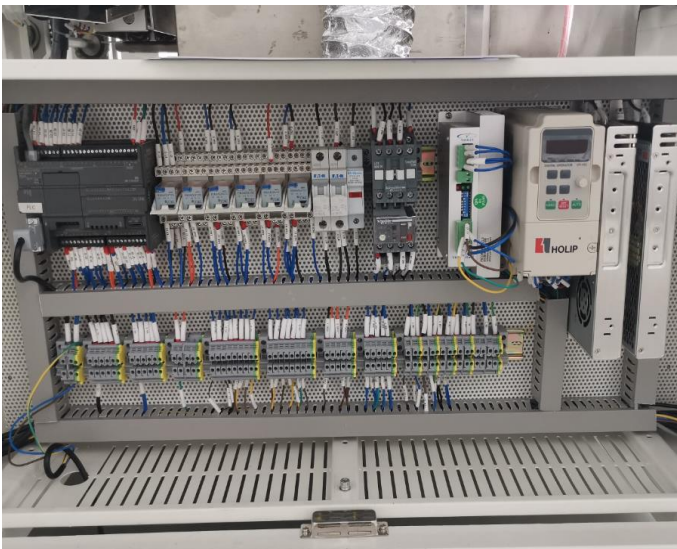
## Wave Soldering Flux Independent Sprayer



### Features:

- 1.Nozzle: Japan Fusoseiki nozzles, adjustable atomizing area, ensuring the long time spray uniformity and reliability.
- 2.Spray control: computer control or manually adjust switch, precise control the spray time, spray speed, economy and environmental protection, digital FLUX flow, spray flow, angle, density, width and other parameters can be recorded.
- 3.Cleaning device: automatic cleaning, modular design, easy maintenance.
- 4.Products comply with CE, CCC, UL and other standards and specifications.
- 5.User-friendly design: fault detection (such as heaters abnormal alarm, etc.), regular maintenance reminders,economy functions, emergency manual transmission function and tool-free maintenance, reduce equipment failure rates.
- 6.Moving parts: PLC adjustment, stepper motor control, accuracy and stability, to ensure accurate spray.
- 7.Core components: using imported components to ensure long-term stability of equipment operation, reduced maintenance costs.
- 8.Closed-loop transmission speed control systems, transportation control accuracy  $\pm 2\text{mm} / \text{min}$ , ensuring speed more stable.

### Product:



### Control System

SIEMESN PLC control

Closed control box to prevent flux corrosion

Air convection, guaranteed temperature

CE and other standards and specifications

### Conveyor System

Failure-free production guaranteed by absolutely parallel transport.

Precise and repeatable adjustment of the transport width.

Reduced maintenance, transport drive mechanism is outside of the process chamber.

Ideal for any application due to various transport systems.

High process reliability by integrated center board support.

Stainless steel chain, effectively reduce friction and wear.

Increase guide bracket and guide wheel, prevent chain knotting and clamping, and ensure transport stability.

High-density aluminium support, no deformation.

Japanese transport motor, frequency conversion control, high accuracy of transport speed.

Full load > 60 kg.

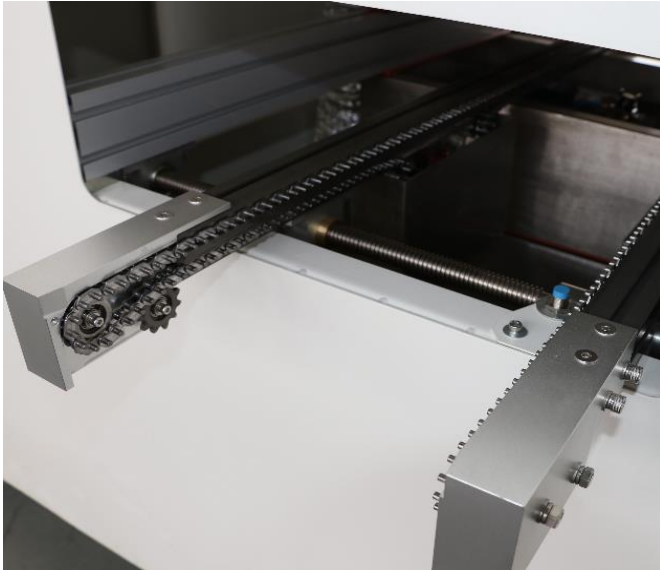
### Cleaning System

Unique closed cleaning system

Ensure clean cleaning

Save cleaning agent

Adjustable flow



### Spraying System

316 stainless steel material, corrosion resistance.

Sealing structure design to prevent flux pollution.

Tool-free plug-in filter with self-contained air extraction system.

Cover is opened manually, conducive to maintenance.

Selective spray optional.

Japanese high precision nozzle, uniform spraying volume.

Automatic cleaning function, prevent clogging.

The spraying range can be adjusted, suitable for different size PCB, saving flux.

Hose adopts anticorrosive material.

Barrier-type safety design, flux will not leak.

The whole drawer modular retractable structure.

TE brand plug-in link structure, tool-free maintenance mode, more maintenance space, reduce maintenance time.

Stepper motor drive mode, stability higher than cylinder.

All using anti-corrosion materials.



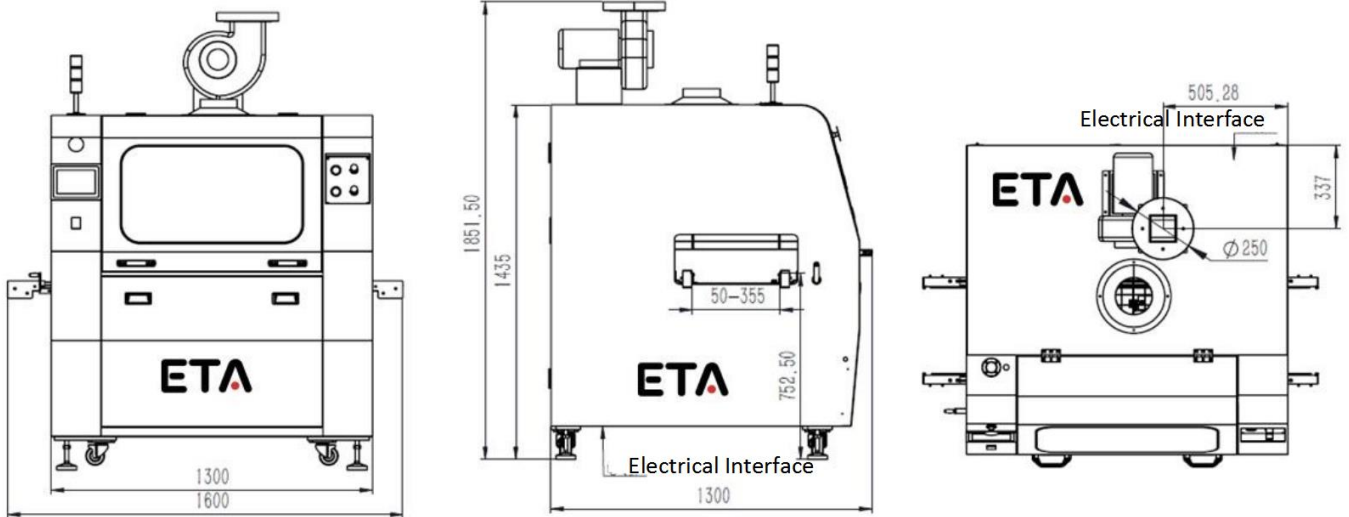
## Materials List :

No.	Item	Brand	Original
1	Nozzle	FUSOSEIKI	Japan
2	Guide Rail	ETA	Taiwan materials
3	Sensor	OMRON, LEUCE, KEYENCE	Japan
4	Stepper Motor	Shinano	Japan
5	Software	ETA	China
6	Conveyor Motor	SPG	Korea
7	Pneumatic Parts	SMC	Japan
8	Contactoer	Schneider	France
9	Touch Screen	MCGS	China
10	PLC	SIEMENS	Gemany

## Parameter:

Specifications	FS350	FS450
Dimension:(mm)	1600X1300X1852	1600X1400X1852
PCB Width(mm)	50-350mm	50-450mm
Weight(kg)	Approx.550kg	
Power Supply	AC220V 50Hz	
Power	1.3kw	
Control System	Touch screen +PLC	
Transmission Method	Step motor	
Spray Pressure	0.25Mpa--0.4Mpa	
Auto Flux Supply	Standard	
Flux flow	10--100ml/min	
Flux Capacity	Approx 7.5 L	
Exhaust	Top exhaust	
Exhaust Diameter	Φ250mm	
Exhaust Capacity	25m <sup>3</sup> /min	
Conveyor Direction	L~R (Option:R~L)	
Conveyor Speed	0-2000(mm/min)	
Conveyor Height	750+/-20 (mm)	
Available PCB Height	Top120mm(Option:250mm),Bottom15mm	
Finger	Stainless steel chain,4.5mm	
Finger Cleaning	Brush	
Conveyor width control	Manually	

\* Attachments may change with product upgrade. If different, please follow the new list.



Thanks for choosing ETA.  
ETA looks forward to win-win cooperation.